

NPN TIP120-121-122

SILICON DARLINGTON POWER TRANSISTORS

NPN epitaxial-base transistors in a monolithic Darlington circuit and housed in a TO-220 envelope. They are intended for use in power linear and switching applications. PNP complements are TIP125-126-127. Compliance to RoHS.

ABSOLUTE MAXIMUM RATINGS

Symbol	Ratings		Value	Unit	
V_{CBO}	Collector-Base Voltage	TIP120	60	V	
		TIP121	80		
		TIP122	100		
V_{CEO}	Collector-Emitter Voltage	TIP120	60	V	
		TIP121	80		
		TIP122	100		
V_{EBO}	Emitter-Base Voltage	TIP120	5	V	
		TIP121			
		TIP122			
I_C	Collector Current	TIP120	5	A	
		TIP121			
		TIP122			
I_{CM}	Collector Peak Current	TIP120	8	A	
		TIP121			
		TIP122			
I_B	Base Current	TIP120	120	mA	
		TIP121			
		TIP122			
P_T	Power Dissipation	@ $T_c < 25^\circ$	TIP120	65	Watts
			TIP121		
			TIP122		
		@ $T_a < 25^\circ$	TIP120	2	
			TIP121		
			TIP122		
T_J	Junction Temperature	TIP120	150	$^\circ\text{C}$	
		TIP121			
		TIP122			
T_s	Storage Temperature range	TIP120	-65 to +150	$^\circ\text{C}$	
		TIP121			
		TIP122			

NPN TIP120-121-122

THERMAL CHARACTERISTICS

Symbol	Ratings	Value	Unit
$R_{thJ-case}$	From junction-case	1.92	°C/W
$R_{thJ-amb}$	From junction-ambient	62.5	°C/W

ELECTRICAL CHARACTERISTICS

TC=25°C unless otherwise noted

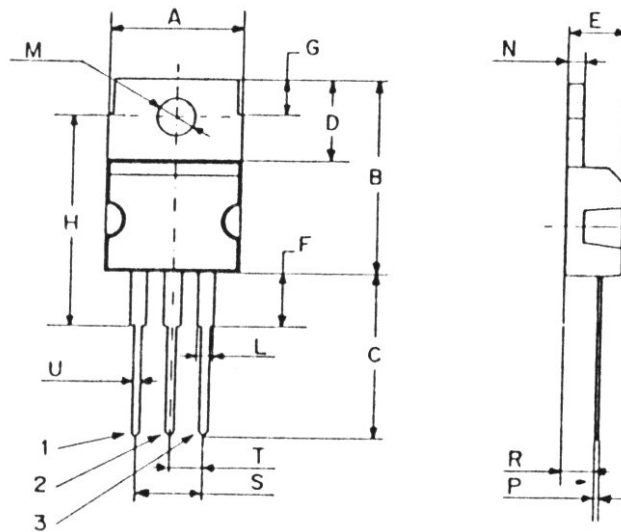
Symbol	Ratings	Test Condition(s)	Min	Typ	Max	Unit	
I_{CBO}	Collector Cutoff Current	$I_E = 0, V_{CB} = V_{CB0max}$	TIP120	-	-	0.2	mA
			TIP121				
			TIP122				
I_{CEO}	Collector Cutoff Current	$I_E = 0$ $V_{CE} = 1/2 V_{CE0max}$	TIP120	-	-	0.5	mA
			TIP121				
			TIP122				
I_{EBO}	Emitter Cutoff Current	$V_{EB} = 5 V, I_C = 0$	TIP120	-	-	2	mA
			TIP121				
			TIP122				
V_{CEO}	Collector-Emitter Breakdown Voltage (*)	$I_C = 30 mA, I_B = 0$	TIP120	60	-	-	V
			TIP121	80	-	-	
			TIP122	100	-	-	
$V_{CE(SAT)}$	Collector-Emitter saturation Voltage (*)	$I_C = 3 A, I_B = 12 mA$	TIP120	-	-	2	V
			TIP121				
			TIP122				
		$I_C = 5 A, I_B = 20 mA$	TIP120	-	-	4	
			TIP121				
			TIP122				
$V_{BE(on)}$	Base-Emitter Voltage (*)	$I_C = 3 A, V_{CE} = 3 V$	TIP120	-	-	2.5	V
			TIP121				
			TIP122				
h_{FE}	DC Current Gain (*)	$V_{CE} = 3.0 V, I_C = 0.5 A$	TIP120	1000	-	-	-
			TIP121				
			TIP122				
		$V_{CE} = 3.0 V, I_C = 3 A$	TIP120	1000	-	-	
			TIP121				
			TIP122				
C_{OB}	Output Capacitance	$I_E = 0, V_{CB} = 10 V,$ $f_{test} = 1MHz$	TIP120	-	-	200	pF
			TIP121				
			TIP122				

(*) Pulse Width $\approx 300 \mu s$, Duty Cycle $\angle 2.0\%$

NPN TIP120-121-122

MECHANICAL DATA CASE TO-220

DIMENSIONS (mm)		
	Min.	Max.
A	9,90	10,30
B	15,65	15,90
C	13,20	13,40
D	6,45	6,65
E	4,30	4,50
F	2,70	3,15
G	2,60	3,00
H	15,75	17,15
L	1,15	1,40
M	3,50	3,70
N	-	1,37
P	0,46	0,55
R	2,50	2,70
S	4,98	5,08
T	2,49	2,54
U	0,70	0,90



Pin 1 :	Base
Pin 2 :	Collector
Pin 3 :	Emitter
Case :	Collector

Revised August 2012

Information furnished is believed to be accurate and reliable. However, Comset Semiconductors assumes no responsibility for the consequences of use of such information nor for any infringement of patents or other rights of third parties which may result from its use. Data are subject to change without notice. Comset Semiconductors makes no warranty, representation or guarantee regarding the suitability of its products for any particular purpose, nor does Comset Semiconductors assume any liability arising out of the application or use of any product and specifically disclaims any and all liability, including without limitation consequential or incidental damages. Comset Semiconductors' products are not authorized for use as critical components in life support devices or systems.